



## Clean & Go Sponge Mop Set

PLEASE READ ALL OF THE INSTRUCTIONS CAREFULLY AND RETAIN FOR FUTURE REFERENCE.

### Caution

Do not fill the bucket with hot or boiling water.  
Use only on cool surfaces.  
Keep out of the reach of children.  
Not suitable for use with bleach.

### Getting Started

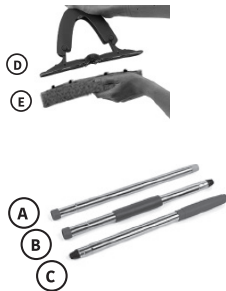
Remove all packaging from the components.  
Separate the cellulose mop head from the bucket and all poles. Check that the bucket is in operational condition before use.  
Fill the bucket to the highest water level marking (see item 4. in 'Directions for Use') with a solution of water and detergent or disinfectant.  
For best results sweep or vacuum surface area before mopping.

### Care and Maintenance

Drain any remaining water from the bucket and clean it after every use. Wipe the main body with a soft, damp cloth and allow to dry thoroughly.  
Store in a cool, dry place.

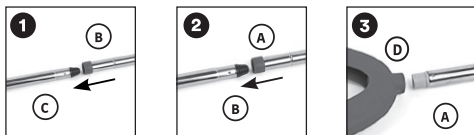
### In the Box

- A) Bottom pole
- B) Middle pole
- C) Upper pole
- D) Mop head
- E) Cellulose mop head

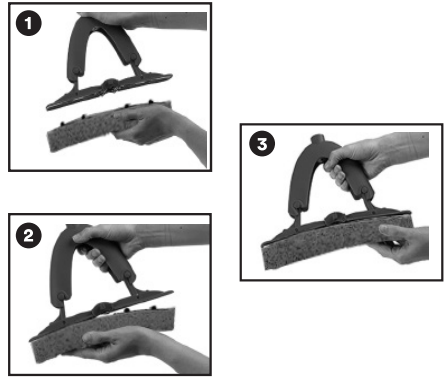


## DIRECTIONS FOR USE

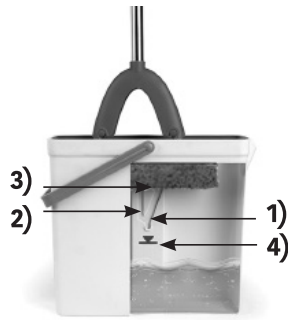
### Assembling the Pole



### Attaching the Sponge Mop Refill



### Description of Parts

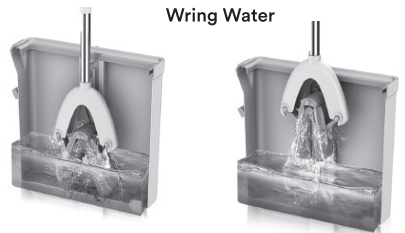


1. Washing location
2. Slide rail
3. Squeeze water location
4. Highest water level

### Wringing the Cellulose Mop Head

Wash

Wring Water



1. To wash the sponge mop, slide the notch of the mop head into the grooves of the mop bucket and slide down to washing location.
2. Bring the cellulose mop up through the slide rail up to the squeeze location to wring excess water off the cellulose mop.